

# DATA SHEET

---

BXAMGR

# BOXILLA® 4.0 KVM AND AV/IT MANAGER

---

24/7 TECHNICAL SUPPORT AT 877.877.2269 OR VISIT [BLACKBOX.COM](http://BLACKBOX.COM)



# OVERVIEW/SPECIFICATIONS

## BOXILLA 3.4 ENTERPRISE LEVEL KVM AND AV/IT MANAGER DATA SHEET

### INTRODUCTION

Boxilla® is an Enterprise Level KVM & AV/IT system management platform that works with Emerald Unified KVM (EMD4000T, EMD4000R, EMD2000SE-T, EMD2000SE-R, EMD2002SE-T, EMD2002SE-R, EMD200DV-T, EMD2000PE-T, EMD2000PE-R, EMD2002PE-T, EMD2002PE-R) and DKM (multiple part numbers).

Boxilla provides a centralized, easy-to-use command center that gives you full monitoring and control of not just devices, but your entire system, all across the enterprise. Control user access. Monitor device status. Proactively diagnose and address network problems before they occur. Upgrade thousands of remote devices with one click, without ever leaving your seat, let alone the building.

### FEATURES

- **COMMAND CENTER DASHBOARD PROVIDES AN INSTANT SNAPSHOT OF THE KVM NETWORK**
- **MANAGE AN UNLIMITED NUMBER OF ENDPOINTS IN YOUR ENTERPRISE-LEVEL IP-BASED KVM SYSTEM**
- **CONTROL DEPLOYMENTS, MONITORING, UPGRADES, TROUBLESHOOTING, SECURITY, STATUS—EVERYTHING!**
- **USE WITH EMERALD TO PROVIDE A SOFTWARE BASED, FUTURE-PROOF SOLUTION**
- **PROVIDES MANAGEMENT AND UNLIMITED DEVICE SCALABILITY FOR EMERALD UNIFIED KVM AND DKM KVM SYSTEMS**
- **DEPLOY, MONITOR, AND MANAGE LARGE-SCALE ENTERPRISE SYSTEMS**
- **PROVIDES DEVICE DISCOVERY AND CONFIGURATION, USER AUTHENTICATION**
- **CENTRALIZED UPGRADE OF ENDPOINT DEVICES**
- **PERFORMANCE MONITORING**
- **PROVIDES ACTIVE DIRECTORY SUPPORT**
- **SUPPORTS CONFIGURATION OF DNS SERVER SETTINGS FOR ACTIVE DIRECTORY**
- **INTEGRATES USB EXTENDER TO PROVIDE UP TO 480 MBPS USB SPEED AND ALLOW SHARING**
- **PUSHES ALERT INFORMATION TO SYSLOG SERVER**
- **SUPPORTS NTP CLIENT**
- **EXTENDS CONNECTION MANAGEMENT GROUPS FROM 10 TO 100**
- **ADDS TIME ZONE SUPPORT**
- **INCLUDES SUPPORT FOR SMTP FOR SYSTEM ALERTS**
- **ZONES ENABLE THE ADMINISTRATOR TO SETUP UNIQUE ZONES (OR GROUPS) OF CONNECTIONS AND USERS SO THAT A LARGE SYSTEM CAN BE MORE EASILY MANAGED.**
- **ANY AD USER CAN NOW LOGIN TO THE RECEIVER EVEN THOUGH THEIR USERNAME MAY NOT BE FOUND UNDER THE USERS PROFILE.**
- **AD USERS CAN HAVE ACCESS RIGHTS ASSIGNED BY OU, WITH NO REQUIREMENT TO ENTER EACH USERNAME INTO BOXILLA, REDUCING ADMIN CONFIGURATION.**
- **SUPPORTS INTEROPERABILITY AMONG ALL EMERALD DEVICES, INCLUDING EMERALD SE/PE V6.0 , EMERALD 4K V1.4, AND BOXILLA 4.0.**

### SPECIFICATIONS FOR BOXILLA – ENTERPRISE LEVEL KVM AND AV/IT MANAGER (BXAMGR)

<b>APPROVALS</b>	CE, FCC, UL, RoHS2
<b>CONNECTORS</b>	(1) 10/100/1000 autosensing Ethernet, Serial, USB 2.0, USB 3.0
<b>POWER</b>	AC input: 100–240 V, 50–60 Hz
<b>1U RACKMOUNT CHASSIS</b>	19" wide, robust metal construction
<b>DIMENSIONS</b>	1.73" H x 17.3" W x 10.6" D (4.4 x 44 x 26.8 cm)
<b>WEIGHT</b>	Unit: 10.96 lb. (4.98 kg); Shipping: 14.92 lb. (6.78 kg)
<b>COMPATIBILITY</b>	Works with Emerald Unified KVM and Black Box DKM



# WHAT'S INCLUDED/APPLICATION DIAGRAM

## BOXILLA 3.4 ENTERPRISE LEVEL KVM AND AV/IT MANAGER (BXAMGR)

### WHAT'S INCLUDED WITH THE BOXILLA (BXAMGR)

- (1) BOXILLA – ENTERPRISE LEVEL KVM AND AV/IT MANAGER
- (1) AC POWER CORD

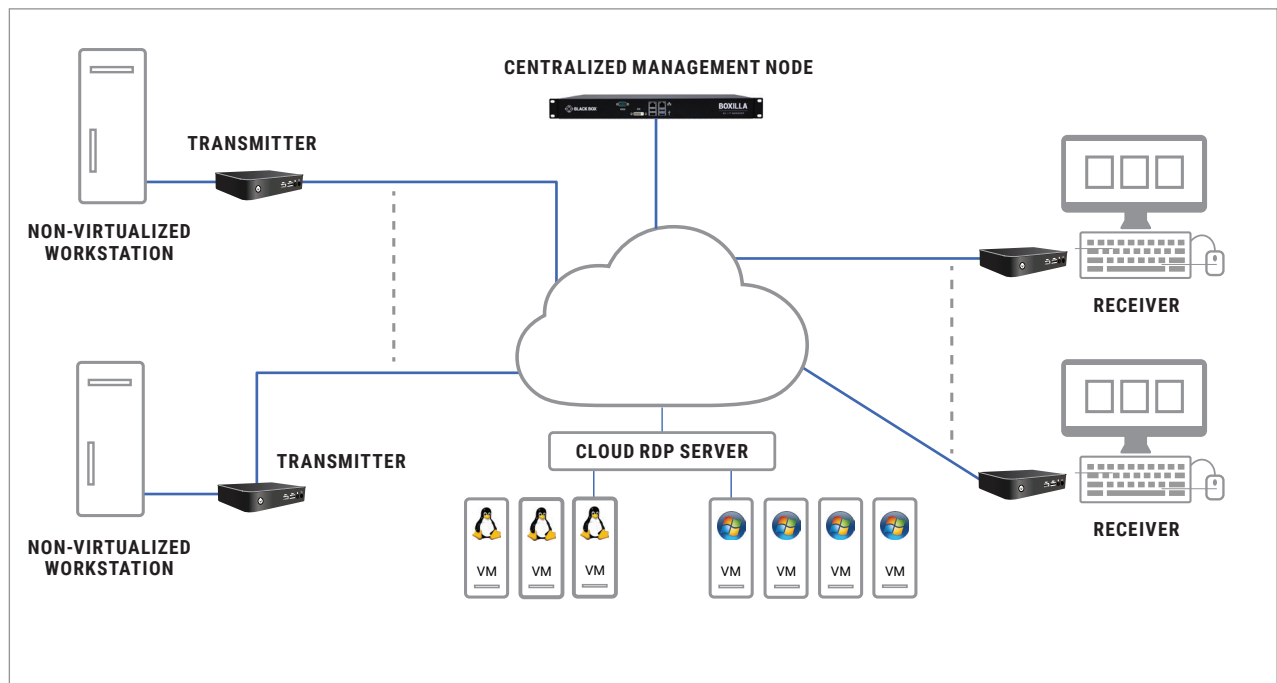
FRONT VIEW



BACK VIEW

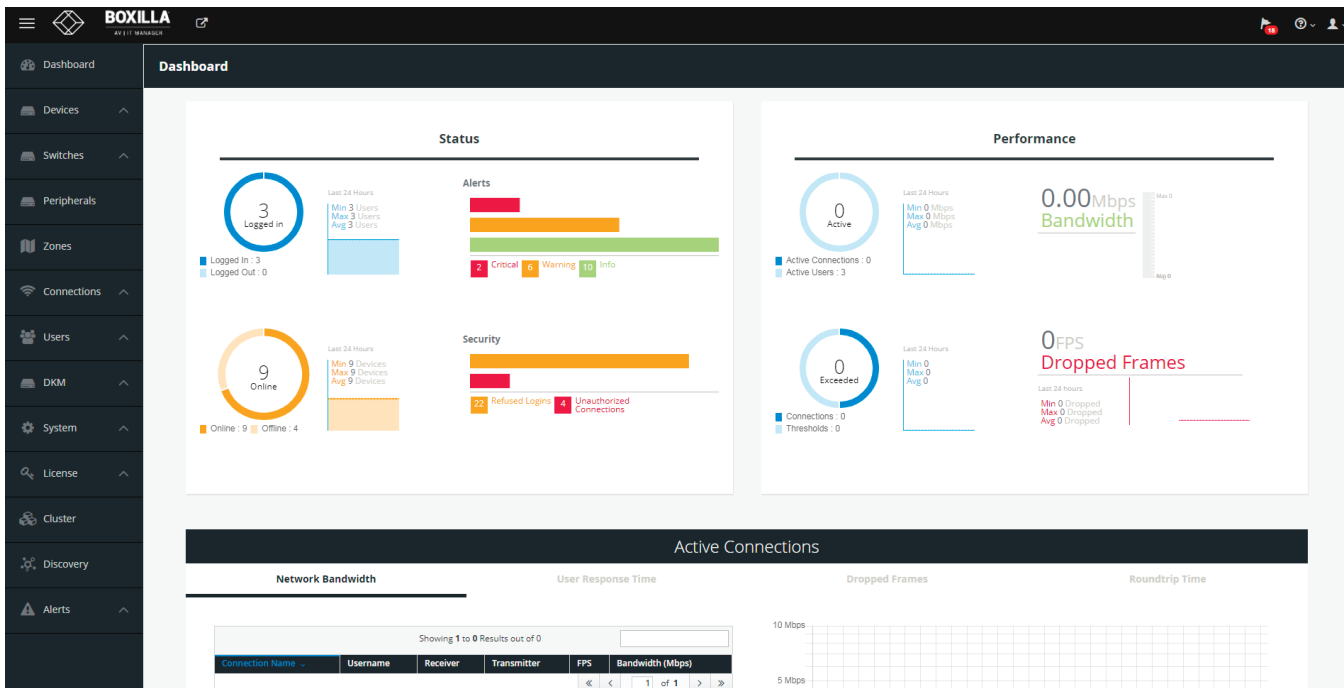


# APPLICATION DIAGRAM



# BOXILLA DASHBOARD

## BOXILLA DASHBOARD



Dashboard drill-down:

Charting of key performance parameters:

- Bandwidth
- Frame rate
- User changes
- Power

Configure and Create:

- Manage domains
- Users
- Connections
- Systems
- Groups



