

DATA SHEET

WC-COA-PRO

COALESCE PRO WIRELESS PRESENTATION

24/7 TECHNICAL SUPPORT AT 877.877.2269 OR VISIT BLACKBOX.COM



OVERVIEW

COALESCE WIRELESS PRESENTATION SYSTEM

INTRODUCTION

Black Box Coalesce makes it easy to connect and share content in meetings from anywhere in the world with AV technology designed to transform the way team members communicate.

Two versions of Coalesce are available:

- **COALESCE MEETING PLACE EDITION (MPE) IS OUR BASIC, FULL-FEATURED MODEL**
- **COALESCE PROFESSIONAL (PRO) OFFERS ALL THE FEATURES OF THE MPE BUT ALSO HAS A NEW VIDEO CONFERENCE TOOL THAT ELIMINATES THE NEED FOR A CONFERENCE BRIDGE, MAKING IT EASY TO PRESENT TO OR LOOK IN ON A MEETING REMOTELY**

FEATURES

- **DONGLE-FREE, BROWSER-BASED SYSTEM**
- **CONNECT AND GO INSTALLATION-FREE SETUP**
- **REMOTE TEAMS WORK AS THOUGH THEY ARE IN THE SAME ROOM IN REAL-TIME**
- **MODERATOR FUNCTIONALITY FROM ANYWHERE IN THE WORLD**

COMPARISON CHART

COALESCE MPE AND COALESCE PRO FEATURES COMPARISON CHART		
FEATURE	Coalesce Meeting Place Edition (MPE)	Coalesce Professional (PRO)
MULTI-PERSON SHARING	Yes	Yes
ATTENDEE DISPLAY MANAGEMENT	Yes	Yes
LOCAL NETWORK CONNECTION	Yes	Yes
OPTIONAL PIN	Yes	Yes
CHROME EXTENSION AND SUPPORT	Yes	Yes
REACH THROUGH PC CONTROL	Yes	Yes
WHITEBOARDING	Yes	Yes
EMBEDDED MEDIA PLAYER	Yes	Yes
REMOTE VIEWING	No	Yes
SPLASH SCREEN CUSTOMIZATION	No	Yes
CENTRAL DEPLOYMENT/MANAGEMENT	No	Yes

NOTE: For more information about Coalesce MPE, see the WC-COA-MPE data sheet.



SPECIFICATIONS

COALESCE PRO HARDWARE SPECIFICATIONS	
HARDWARE	
TYPE	Android® Based SBC
DIMENSIONS	1.18"H x 4.72"W x 4.72"D (3 x 12 x 12 cm)
WEIGHT	0.40 lb. (0.18 kg)
MOUNTING OPTIONS	Console tabletop
CONNECTORS	(1) HDMI, (1) Optical Audio, (1) RJ-45 Ethernet (10/100/1000), (1) USB 2.0, (1) USB 3.0, (1) USB-C, (1) Micro SD (1) 5-VDC power connector
POWER	
INPUT	5 VDC, 3 A
SYSTEM	
PROCESSOR	Rockchip® RK399-6 Cores 64-bit (Dual Core A72 + Quad Core A53)
GRAPHICS PROCESSOR	Mali-T864
INTERNAL STORAGE	2 GB DDR3 RAM, 16 GB Flash Storage
WIRELESS	Dual Band 802.11 a/b/g/n AC2.0
VIDEO OUTPUT	HDMI output with Audio
STREAMING VIDEO SUPPORT	HD (1920 x 1080), HD SD (1280 x 720)
AUDIO OUTPUT	SPDIF Digital Optical Audio
I/O	(1) USB 2.0, (1) USB 3.0, (1) USB-C, (1) Micro SD, IR
OPERATING SYSTEM	Android 6.0 Marshmallow
COALESCE SOFTWARE PRE-INSTALLED	Includes Android version of Coalesce server software built for wireless sharing.
SECURITY SPECIFICATIONS	
NETWORK INTERFACE CARDS	(1) Ethernet NIC and (1) wireless NIC
NETWORK SETTINGS	Accessed via Coalesce configuration panel and an (optional) admin pin; Settings include DHCP or fixed address, DNS server, SSID Name (for wireless)
NETWORK MODES	Wireless Access Point, Ethernet Network Deployment, Dual-Network, Wireless Client
ENCRYPTION	2048-bit length encryption key, TLS/DTLS, HTTPS
SOFTWARE SECURITY AND ACCESS OPTIONS	Disable/enable local configuration, open access, pin lock, screen key



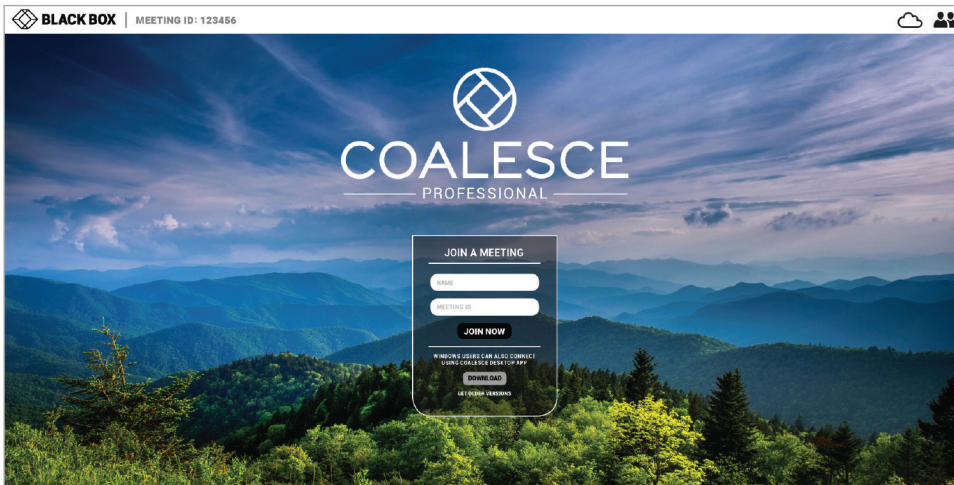
SPECIFICATIONS (CONTINUED)

COALESCE PRO FEATURE SPECIFICATIONS	
CLIENT OS	
PC APPLICATION	Windows® 10, Windows 8, Windows 7 (limited support)
CHROME® WEB CLIENT	Google Chrome version 55+ - Windows - Mac® - Ubuntu®, Fedora® - ChromeOS®
AIRPLAY®	iOS® 9, 10 MacOS® 10.10, 10.11, 10.12
ANDROID APPLICATION	Android 5 and above
IOS APPLICATION	iOS 10 64-bit device
CONNECTIVITY	
	Integrated wireless access point (can be enabled or disabled); Connect to a network using Ethernet and/or Wi-Fi; Connect to a network with DHCP or Static IP; Unique meeting ID generated on launch of new meeting; Optional PIN for added security when connected to Internet
RECEIVER INTERFACE	
	Connect up to 8 participant's screens; Touch display support (or control via connected mouse/keyboard); Make any connected participant the Active Display; Drag & move client displays at receiver/display; Desktop control of full-screen client PC's (Active Display) from the receiver/display; Whiteboard/Annotation tools
CLIENT INTERFACE	
WINDOWS APPLICATION	<ul style="list-style-type: none"> • Share your desktop • Choose to be the Active Display • Pause sharing • In-room and remote meeting access
CHROME WEB CLIENT	<ul style="list-style-type: none"> • Share your desktop/selected application • Choose to be the Active Display • Pause sharing • In-room and remote meeting access
IOS APPLICATION	<ul style="list-style-type: none"> • Share a web page, image or video • Choose to be the Active Display • In-room and remote meeting access
ANDROID APPLICATION	<ul style="list-style-type: none"> • Share your device screen • Choose to be the Active Display • In-room and remote meeting access
AIRPLAY	<ul style="list-style-type: none"> • Connect via same subnet or Access Point • Share your screen • Use meeting ID to ensure secure connection

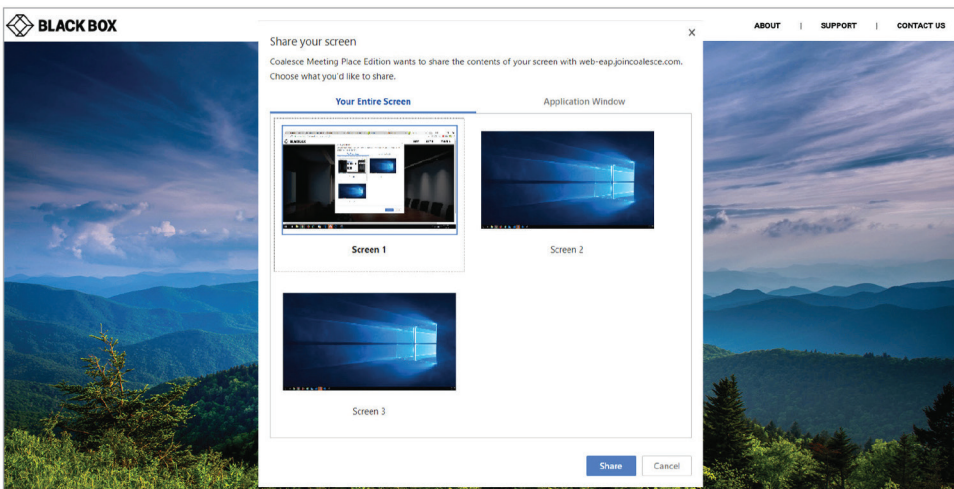


CONNECT AND SHARE

STEP 1: CONNECT TO COALESCE PRO IN YOUR BROWSER



STEP 2: SHARE YOUR SCREEN AND PRESENT IN SECONDS



ORDERING INFORMATION

ITEM	CODE
Coalesce Pro	
Wireless Presentation System	WC-COA-PRO
Coalesce MPE	WC-COA-MPE

DISCLAIMER

Black Box Corporation shall not be liable for damages of any kind, including, but not limited to, punitive, consequential or cost of cover damages, resulting from any errors in the product information or specifications set forth in this document and Black Box Corporation may revise this document at any time without notice.

ABOUT BLACK BOX

Black Box is a world leading technology solutions provider specializing in complete high-performance KVM, professional A/V signal distribution and extension and switching solutions for mission-critical applications. Black Box is dedicated to delivering superior project engineering, technical support, and 24/7 customer service you can rely on for your most critical operations.

Every day, our customers trust us to design, integrate, and maintain reliable control room solutions for broadcasting, post-production, stadiums & arenas, medical, air traffic control, oil & gas, government & military, and utility industries. Leave the tech to us and our comprehensive technology solutions will deliver secure connections, fast-response times, real-time collaboration and more.

FILENAME: WC-COA-PRO_DS_REV1.PDF

© COPYRIGHT 2018. BLACK BOX CORPORATION. ALL RIGHTS RESERVED.

